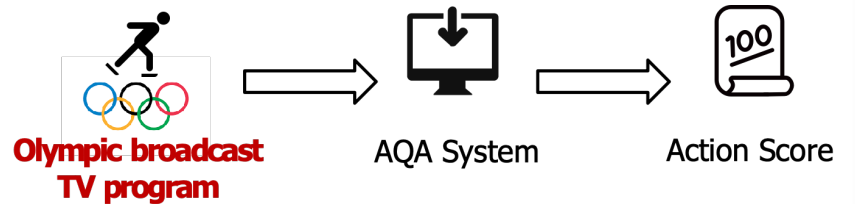


Inter-Frame Similarity Sampling and Scene-Aware Segmentation Based Action Quality Assessment for Figure Skating Spin

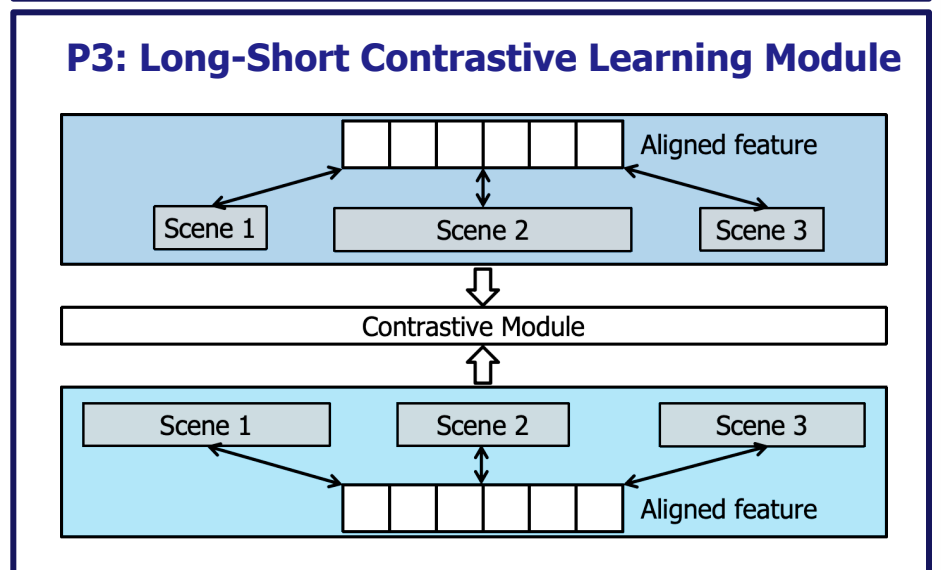
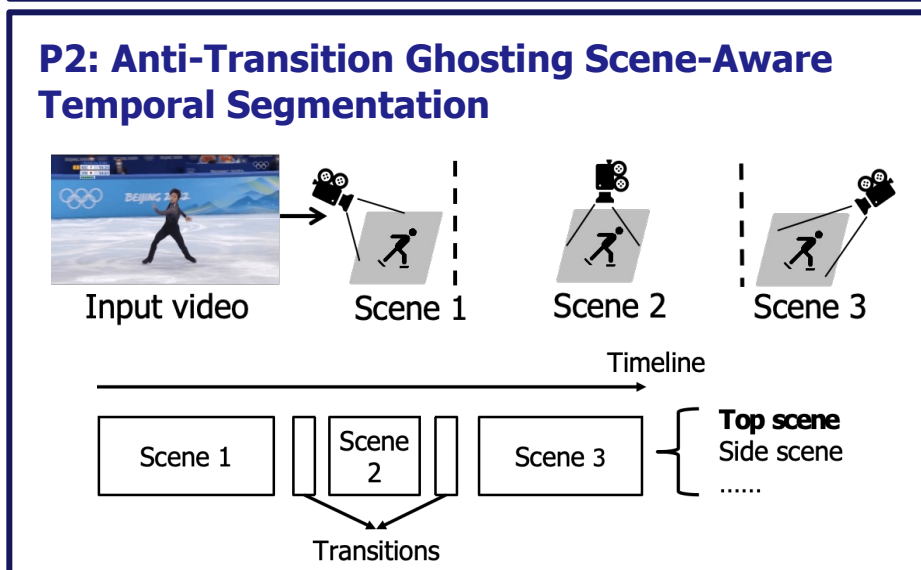
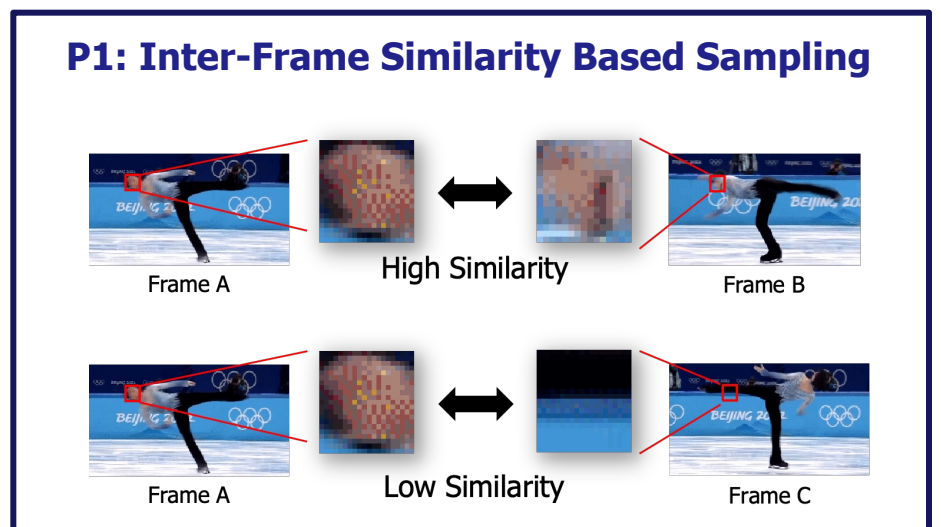
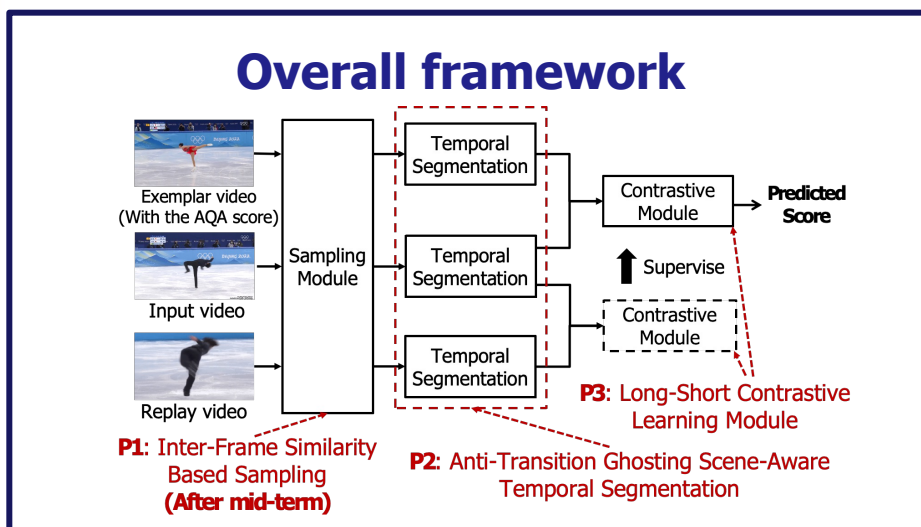
胡湧奇 池永研究室 修士課程修了

Background

- Importance
 - Improve fairness
 - Reduce controversies
 - Provide training feedback
- Challenge
 - Repetitive actions are redundant information
 - Scene change leads to inconsistent temporal information



Proposed method



Experiments Result

	CW1	CW2	P1	P2	P2+P3	P1+P2+P3
Ranking correlation (ρ) \uparrow	0.7108	0.7050	0.7360	0.7120	0.7347	0.7501
Relative ℓ_2 -distance ($\times 100$) \downarrow	3.337	2.576	2.044	2.265	2.223	2.022

Conclusion

- The proposed method achieves 0.7501 on Ranking correlation and 2.022 on Relative ℓ_2 -distance, which is better than conventional works.

